



Partner Of Excellence, from  
production to delivery of finished  
goods.



## Who We Are:

CMS Meccanica Tonon SRL is a family-run company specializing in high-precision mechanical

machining for a wide range of industrial sectors, including Oil & Gas. With a strong commitment to quality, innovation, and reliability, we deliver custom solutions that meet the highest technical standards.

Founded in the 1980s by Silvano Tonon—who patented and mass-produced a pioneering silo-cleaning tool—CMS has grown steadily, driven by a passion for precision mechanics. That same passion lives on today through his son, Massimo Tonon, who serves as both Production and Sales Manager.

President and founder Silvano Tonon continues to guide the company alongside key family members: Chiara Tonon, Purchasing Manager; and Federica Visentin, Administrative and Safety Manager. The areas of Technical Sales, Engineering, Process Improvement, and Cost Management are overseen by Claudio Masutti.

Our production team consists of 25 young and talented mechanical "artists"—with an average age of 32—who share our deep passion

for mechanics and craftsmanship. **Each piece they create reflects the care, precision, and innovation that define CMS.**



Partner Of Excellence, from production to delivery of finished goods.



### Products :

Our core business is special single parts, or limited runs of 20-30 pcs, maximum range is 5,000-10,000 pcs.

Our machine park allows us to be autonomous on practically all mechanical machining operations, from turning  $d=70\text{mm}$  with resumption up to  $d=450\text{mm}$  to milling with 5-axis machining centres the maximum machinable dimensions of our products are  $3000 \times 1000 \times 1000\text{mm}$ , Wire and Tuff EDM machines that allow us to create parts with special requirements.

Throughout our history CMS has produced many different types of parts from many different materials.

Most of our products are unique pieces created in collaboration with the R&D of historic and important companies universities in northern Italy such as the University of Padua.



Partner Of Excellence, from production to delivery of finished goods.



Service :



CONSULTING & DESIGN



PURCHASING RAW MATERIAL



LASER MARKING



ORDER MANAGEMENT



SURFACE TREATMENTS



CLEAN ROOM ASSEMBLY



TERMAL TREATMENTS



SPECIFIC PACKAGING

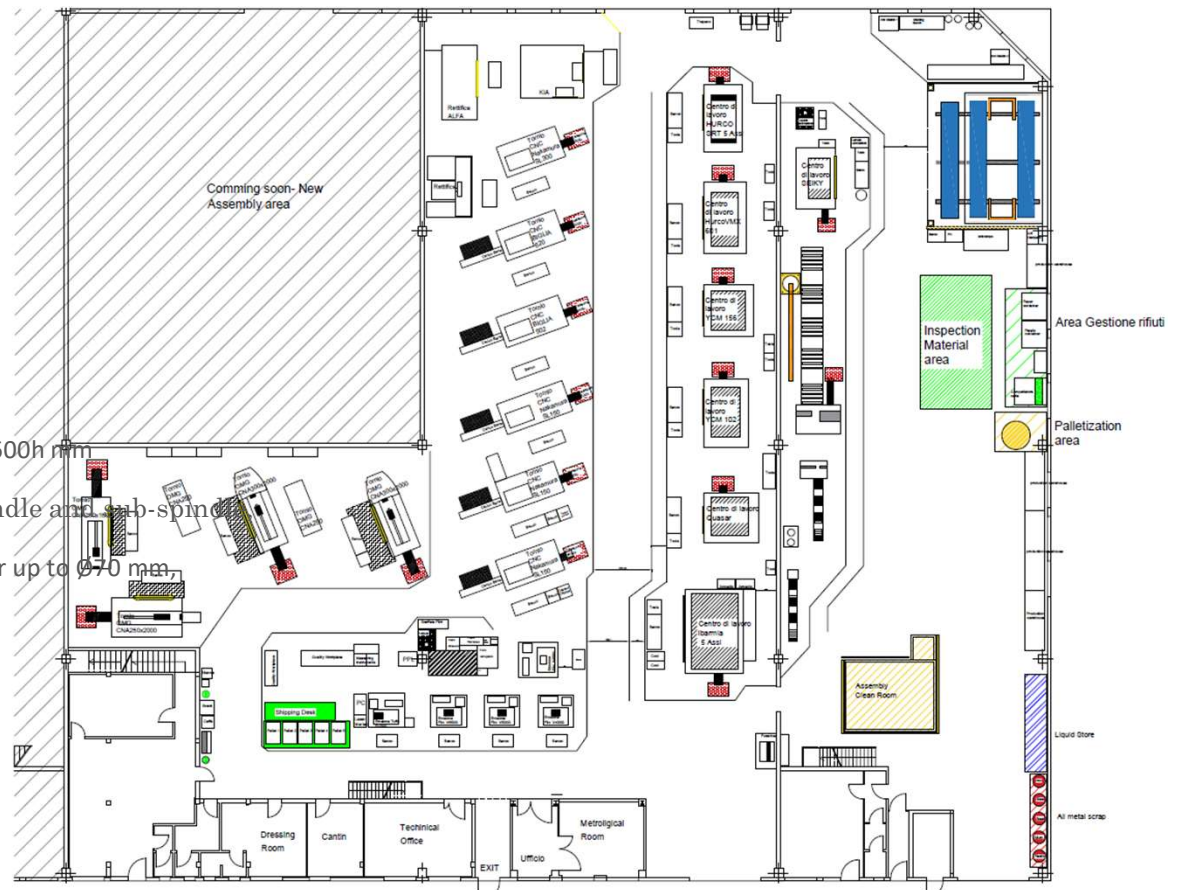


Partner Of Excellence, from production to delivery of finished goods.

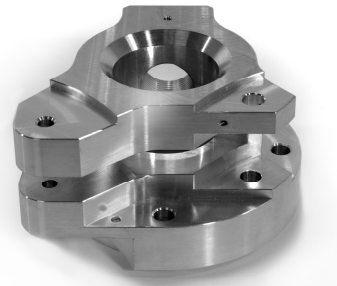
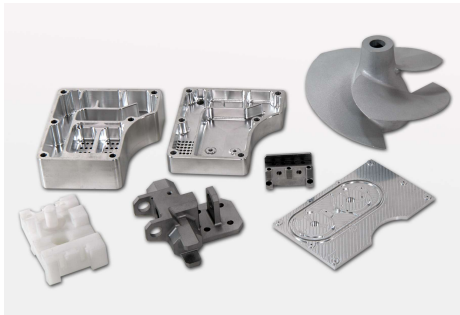
## Layout :

Production plan of 2700mq

- n° 9 milling machine CNC a 3, 4 e 5 axes up to 3000x800x600h mm
- n° 7 turning lathe CNC da 2 a 3 axes, equipped with spindle and sub-spindle, single or independent twin turrets, with automatic bar feeder up to  $\varnothing 70$  mm and secondary operations up to  $\varnothing 450$  mm
- n° 4 self-turning lathe d=300mm L=1500mm e d= 500mm L=1500mm
- n° 4 Wire erosion max da 800x500x350h mm
- n° 1 tuff erosion 400x300x350h mm
- n.1 EDM 400x300x350h mm
- n°2 rettifiche
- n°1 ZEISS Contura 2 temperature- and humidity-controlled the quality control metrology room.
- N.1 Clean Room ISO7



Partner Of Excellence, from production to delivery of finished goods.



### Reference:

CMS Meccanica Tonon S.r.l manages around 200 customers worldwide.

Sectors range from the creation of special parts for OIL&GAS, AUTOMOTIVE , AUTOMATION , NAVY , FOOD , PACKAGING , PHARMA ,

80% of our turnover is foreign, our customers' countries are Germany, Switzerland, Austria, France, Northern Europe, US and

Eastern Europe. For some industrial groups, we are the reference for the R&D department, we have achieved a non compliance

rate of less than 0.02%.

A very good result as a result of our very stringent quality process with stringent quality process with the use of advanced control equipment,

such as the ZEISS CONTURA 2 Quality Control room, testifying to advanced professionalism.

We work in Free Pass with a number of customers, and our efforts have been recognised through the award of the Best Supplier

of the Year prize. We are collaborating with the European Research Centre in Geneva on the creation and assembly of specific equipment and with

the sports racing management sector of the most famous Italian brand.



Partner Of Excellence, from production to delivery of finished goods.

## Market :

Our company has always based its business and technical DNA on the variety of customers and types of parts produced.

We can divide our Core Business into four major Families :

### Automation:

Automation is the most important market for us. Some of our customers produce automated lines to customer specifications,

Our goal is to delivery the order material within the timeframe defined with the customer .

### Oil & Gas:

The Oil & Gas sector is constantly growing, and our company has solid experience in this field.

We collaborate with major companies in the sector, produce special bushings for thermal or nuclear power plants/plants, some engine parts for shins.

### Research and Development (R&D):

Thanks to more than 40 years of experience, we work closely for some large industrial groups on the production of prototypes, in the field of

Precision Lenses and Automotive sports racing sector.

### Packaging:

The packaging sector, similar in part to the automation sector, ranges from the special construction of packaging islands, gripper hands

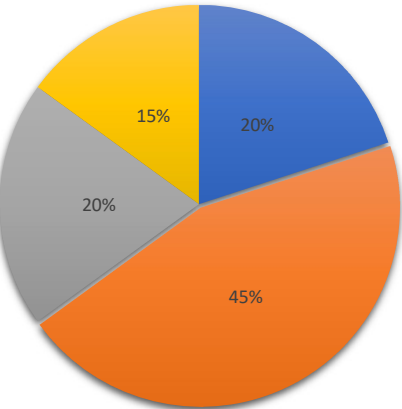
grippers for robots, parts for bottling lines.



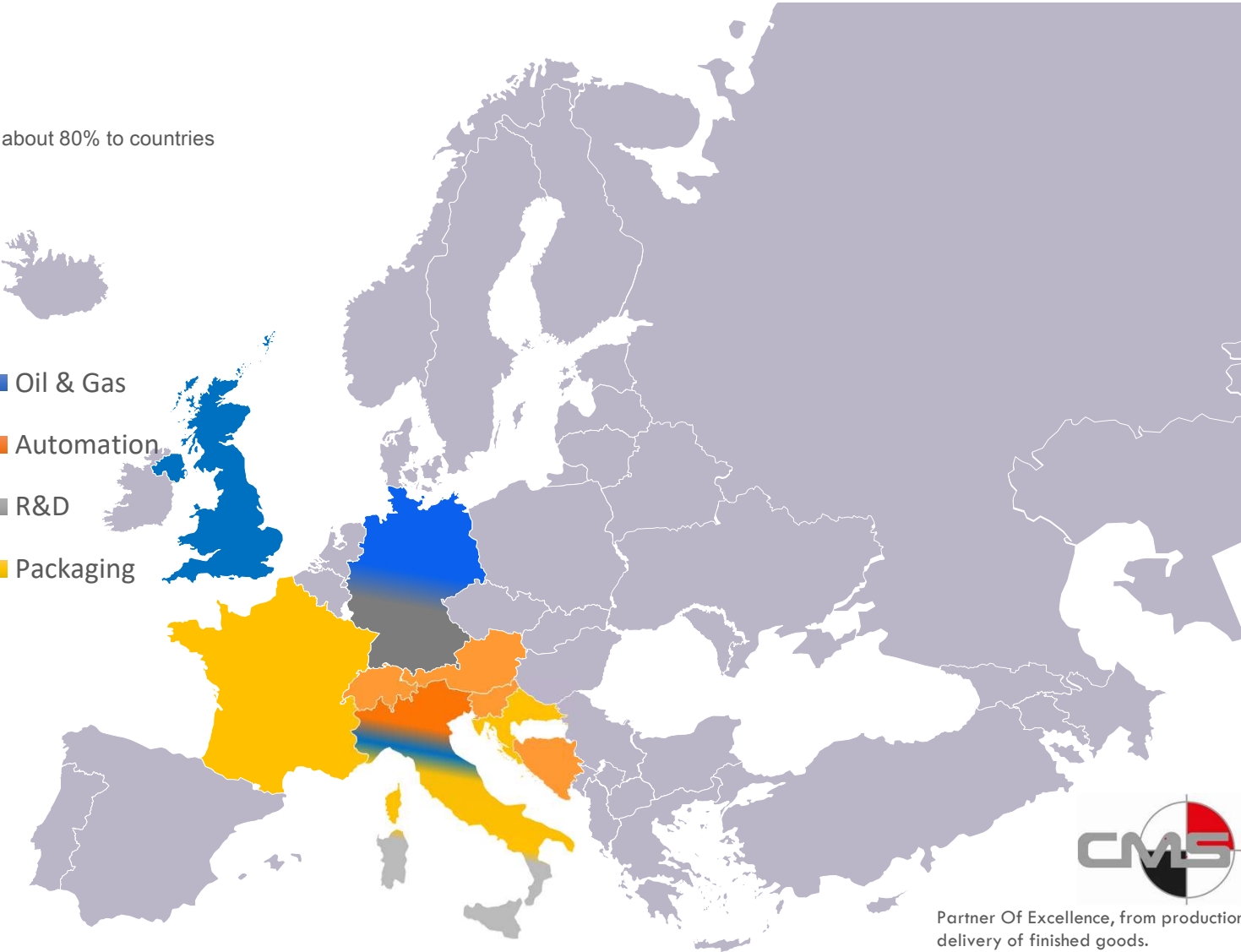
Partner Of Excellence, from production to delivery of finished goods.

# Market locations

CMS Meccanica Tonon SRL exports about 80% to countries in the European Community



- Oil & Gas
- Automation
- R&D
- Packaging



Partner Of Excellence, from production to delivery of finished goods.



## Green think :

### Our certifications :

- ✓ ISO 9001
- ✓ ISO 9100 under validation
- ✓ ISO 14001 in the process of validation
- ✓ MOKA started feasibility study for certification



- ✓ 120 kW solar panel system on the entire roof of the factory.
- ✓ Use of recyclable materials e.g. adhesive tape made of paper material paper,
- ✓ 4.0 technology on 90% of the machine tools.
- ✓ All lighting is low consumption LED type.
- ✓ Started separate waste collection process in production and offices.



Partner Of Excellence, from production to delivery of finished goods.



Foglio di Lavorazione																																																																							
Cliente: 183 - V. ARIO 124 Descrizione Gruppo: 920252528 Data di lavorazione: 10 Data di produzione: 18/11/2023 Data di scadenza: 18/11/2023 02/0000010000	Descrizione Cliente: 021478400 Contatore Clienti: 000004 - 2 Contatore: 02179 Indirizzo Cliente: 00100 ROMA Indirizzo: 00100 ROMA Indirizzo: 00100 ROMA Indirizzo: 00100 ROMA																																																																						
<table border="1"> <thead> <tr> <th>Seq. Ordine</th> <th>Operazione</th> <th>Tipologia</th> <th>Quantità</th> <th>Data Inizio</th> <th>Data Fine</th> <th>Tempo Medio (min)</th> <th>Usc. Ordine</th> <th>Usc. Scarto</th> <th>Usc. Rifiuto</th> </tr> </thead> <tbody> <tr><td> </td><td> </td><td> </td><td> </td><td> </td><td> </td><td> </td><td> </td><td> </td><td> </td></tr> <tr><td> </td><td> </td><td> </td><td> </td><td> </td><td> </td><td> </td><td> </td><td> </td><td> </td></tr> <tr><td> </td><td> </td><td> </td><td> </td><td> </td><td> </td><td> </td><td> </td><td> </td><td> </td></tr> <tr><td> </td><td> </td><td> </td><td> </td><td> </td><td> </td><td> </td><td> </td><td> </td><td> </td></tr> <tr><td> </td><td> </td><td> </td><td> </td><td> </td><td> </td><td> </td><td> </td><td> </td><td> </td></tr> <tr><td> </td><td> </td><td> </td><td> </td><td> </td><td> </td><td> </td><td> </td><td> </td><td> </td></tr> </tbody> </table>	Seq. Ordine	Operazione	Tipologia	Quantità	Data Inizio	Data Fine	Tempo Medio (min)	Usc. Ordine	Usc. Scarto	Usc. Rifiuto																																																													Barcode Barcode Barcode Barcode
Seq. Ordine	Operazione	Tipologia	Quantità	Data Inizio	Data Fine	Tempo Medio (min)	Usc. Ordine	Usc. Scarto	Usc. Rifiuto																																																														



- Lettura foglio di lavoro «Cliente»
- Avvio e chiusura della fasi



- Creazione della DBA con Materiale e fase di lavoro
- Il sistema identificherà la tipologia di macchina
- Inserendo data, ora di inizio e fine lavorazione
- Quantità di pezzi effettivamente lavorati
- Quantità e tipologia di scarto

**Improvements :**

- 2023 New Onda management system for organising customer orders and processing times.
- 2023 New CLEAN ROOM, for special assemblies with controlled temperature and humidity.
- 2023 New CIAMPALINI Automated Warehouse required for raw material management.
- 2024 Start-up of Project for production control via tablet device.
- 2024 Purchase of a section of neighbouring building to create a new island dedicated to special assemblies.



Partner Of Excellence, from production to delivery of finished goods.

Starting from July 2025, we will launch a new project: **“Made in Italy in the UAE”** specifically focused on the **Oil & Gas sector**.

The project is supported and managed through the establishment of two new offices featuring:

1. Commercial support in both English and Arabic
2. New commercial branches of CMS Meccanica Tonon directly in Dubai and Abu Dhabi

CMS MECCANICA in EMIRATED:

DUBAI MOOSA TOWER 2, 14° Piano – Trade Center, Dubai UAE

ABU DHABI 7° Piano - CI Tower - Zona Khalidiya



End.

Thanks



Partner Of Excellence, from production to  
delivery of finished goods.